

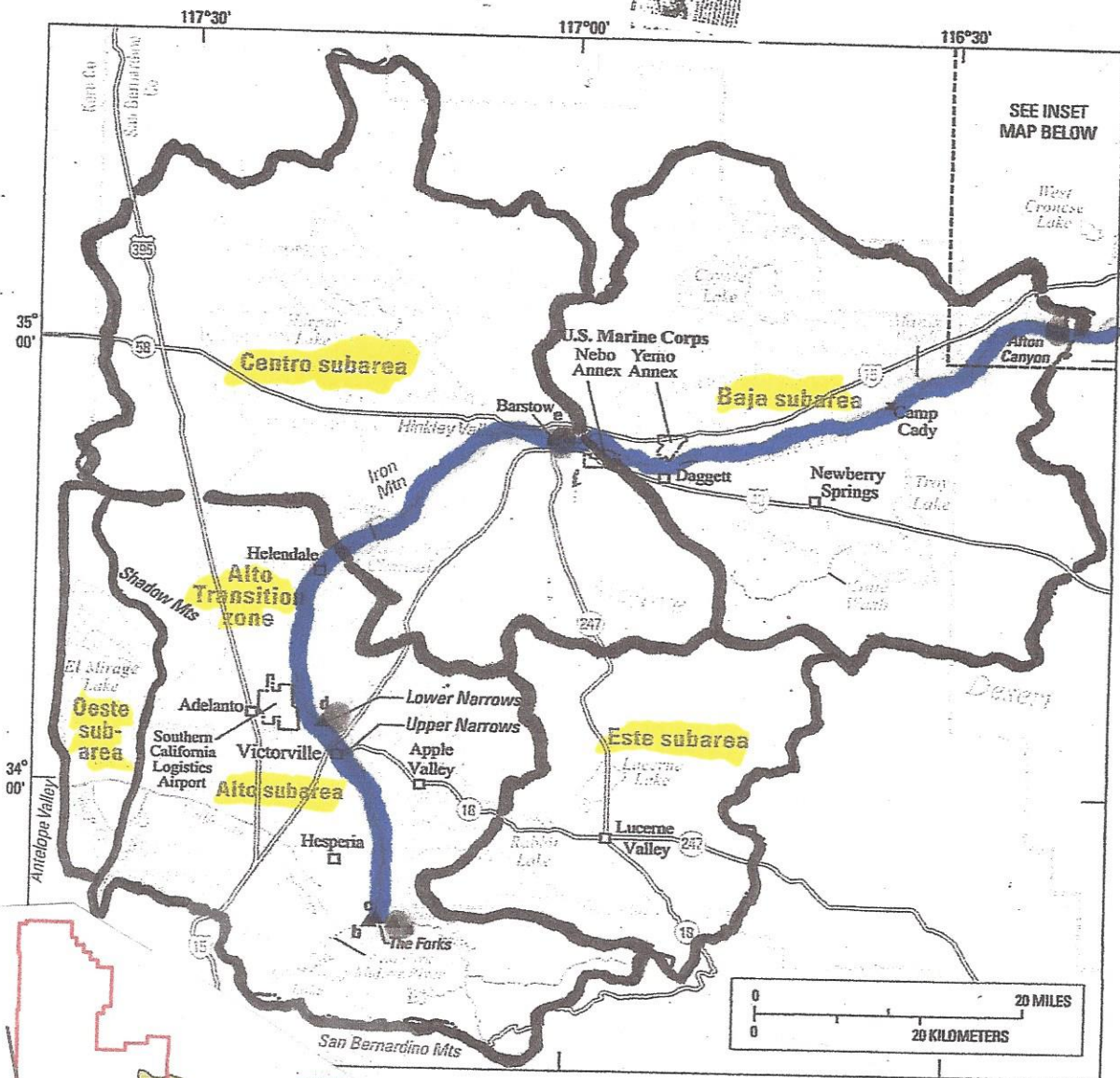
June TAC Meeting- (Technical Advisory Committee)

Power point presented on transition zone as growth of Riparian habitat in this reach of the Mojave River has possibly inhibited those intermittent flows from passing beyond the transition zone. (Which stems from Ore Grande-Helendale)

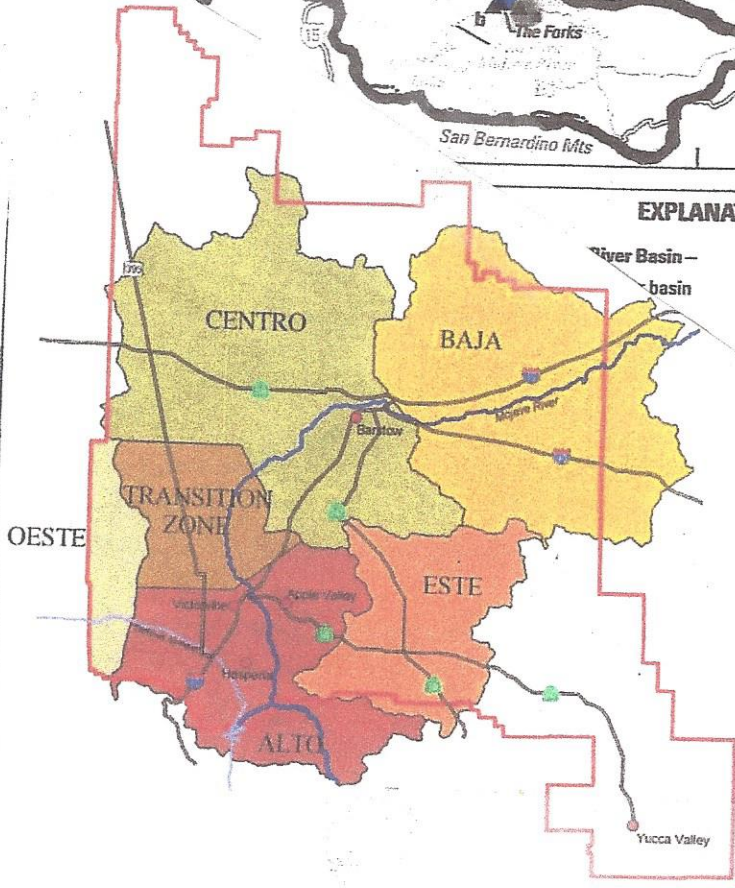
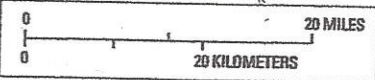
- Analyze existing flood flow at Northern terminus of transition zone & compare to historic conditions.
- Develop Base maps, collect data, existing hydrologic & hydraulic models.
- Target start date October 2016 End Date: September 2017

Report: Ellen Johnson

(Original Hand written report in office for public view)



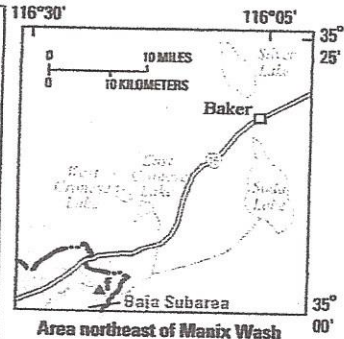
SEE INSET
MAP BELOW



EXPLANATION

- ▲ Gaging station and identifier –
 - a 10260500
 - b 10260950 and 10261000
 - c 10261100
 - d 10261500
 - e 10262500
 - f 10263000

Dry lake (playa)
Yabba Lake



water basin, southern California.