

Steel Metal Shipping Container Roof Kit #2 - 38'x40'

~~\$9,999.00~~ **\$8,999.00**

Convert your existing shipping containers into functional and secure storage or working area by adding a shipping container cover. Shipping Container Roof Kit provides an economical solution for a variety of needs by adding a roof between two shipping containers, also known as Conex boxes or ISO containers, with our... [Read more](#)

COLOR: GRAY / WHITE



- Useable area: 40' x 20'
- Materials Used: All steel construction
- Finish: Acrylic galvalume finish
- Mount Location: exterior-mounted
- **Prices starting at \$29,680.14**

Freight and Steel costs are estimated and can change on a daily basis. Pricing is confirmed at the time of purchase.

Additional Options:

- Part Number: CN-GB4040
- Dimensions (overall): 40' x 56'
- Useable area: 40' x 40'
- Same features and benefits as listed above
- **Prices starting at \$55,790.35**

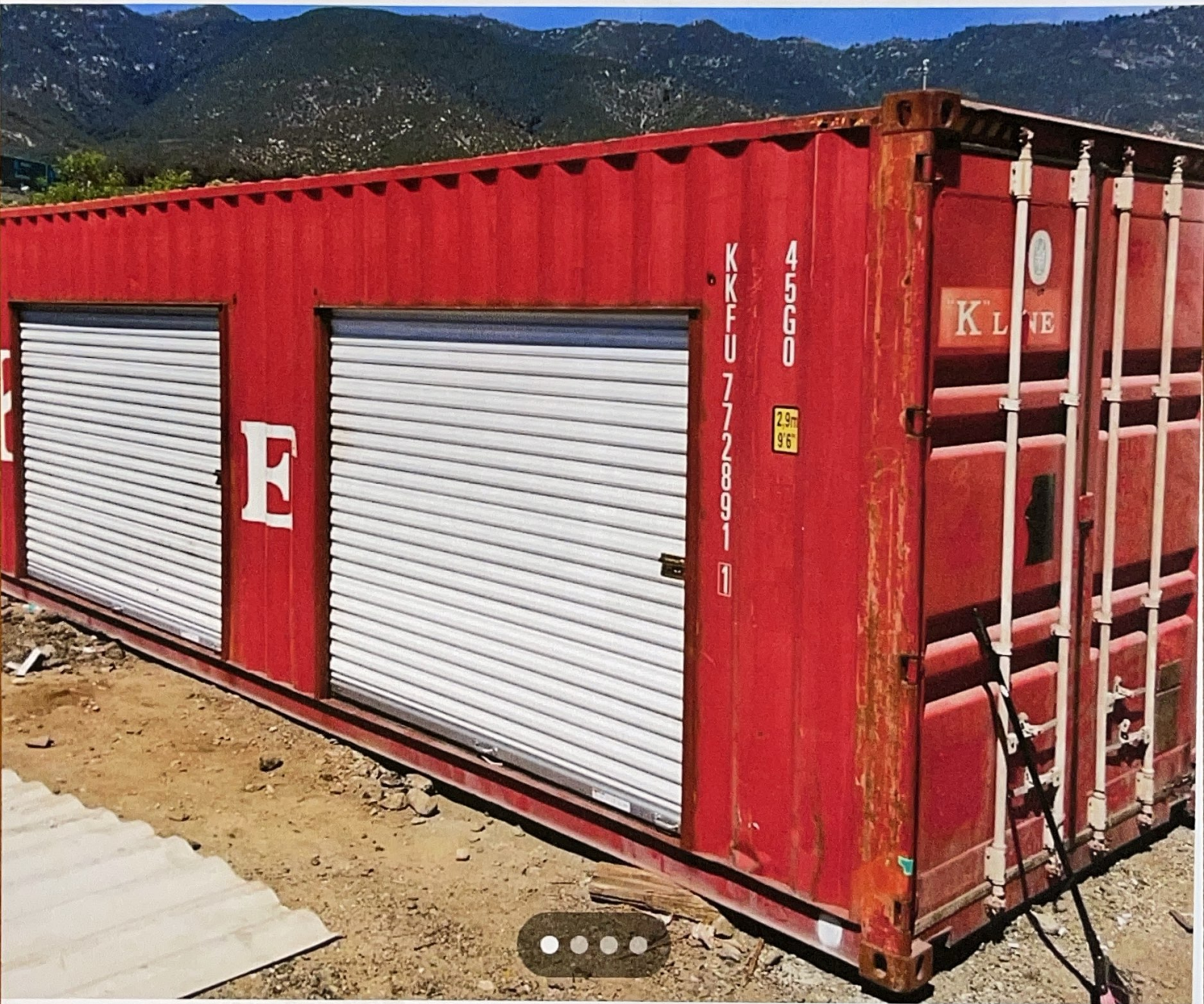
Freight and Steel costs are estimated and can change on a daily basis. Pricing is confirmed at the time of purchase.



GABLE 40:

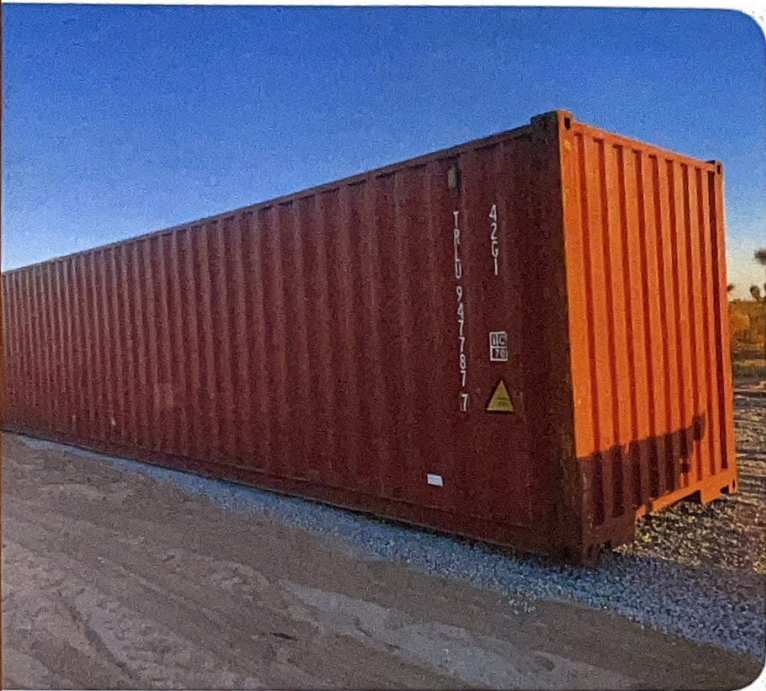
- Part Number: CN-GB4020
- Dimensions (overall): 20' x 56'
- Dimensions (covered): 40' x 20'
- Useable area: 40' x 20'
- Materials Used: All steel construction
- Finish: Acrylic galvalume finish
- Mount Location: exterior-mounted
- **Prices starting at \$29,680.14**

Freight and Steel costs are estimated and can change on a daily basis. Pricing is confirmed at the time of purchase.



3 Door Storage units

\$4,500



Description

Shipping Containers in stock!

CALL OR TEXT US @ 505 585 1418 FOR A
QUICK QUOTE! "mendy"

OR send me a message with your ZIP code and
desired size!

Sizes Available:

-20

-40

-40HC

Lowest Prices Guaranteed ✓

Fast Delivery Available ✓

Price Match Program ✓

Guaranteed Leak Free ✓

Please dont forget to mention my name when
you contact us :)

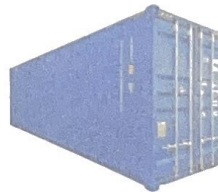
WWW.1STOPCONTAINERS.COM

@1STOPCONTAINERS

CHECK US OUT ON INSTAGRAM!

Hi! We do! We are located in
Long Beach but deliver to
Barstow weekly!
\$2400 delivered





New 40 Foot Shipping Container For Sale

IICL - Standard

Starts at \$3,700.00

Our 40-foot "New One Trip" shipping container is almost brand new, used only once for transport. Due to its single trip across the ocean, this durable container may have minor imperfections, like small dents or scrapes. Built in Asia and shipped worldwide, each container is loaded with cargo one





SUPERBOX



Used 40 Foot Shipping Containers For Sale

Wind and Watertight

Starts at \$2,000.00

Looking for a dependable and secure st



Questions? Contact us at 800-757-6742 or support@unitedcarports.com

 **SHARE**








Estimate for [92365](#): \$19,142

SAVE

PURCHASE



Garage/Shop
24' W x 40' L x 12' H

- STYLE 
- SIZE 
- SIDES & ENDS 
- DOORS, WINDOWS, & FRAMEOUTS 
- COLORS 
- ADDITIONAL OPTIONS 
- SERVICES, WARRANTY, & INFORMATION 

YOUR ESTIMATE: \$19,142 (expand for details) 

SAVE

PURCHASE

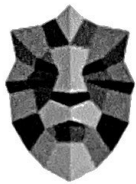

HOME

 
LEFT RIGHT

 
IN OUT


UNDO


RESET



ELITE METAL
BUILDINGS

We shine above the rest™

Questions?

Call John @
480-462-0410

CANCELLED ORDER AVAILABLE

CALL NOW @ 480-462-0410

40x60x16 Building

This customer placed a deposit on the order and then decided he wanted to add a shop area of roughly 1500 sq. ft. to his design since it was cheaper than a 2nd freestanding building.

He upgraded to a 50x80x16 instead and we have agreed to cancel his original order and now need to find it a new home!!

Only this 1 building package will be available at this price & WILL NOT

LAST, SO CALL NOW!

Retail Price: \$49,750 +++ = Mid-High 50's
Original Customers Clearance Price: \$44,300
Original Customers Deposit: \$11,075

Remaining Balance = Your Price: \$33,225
25% Deposit required = \$8,300!

Questions? Call John at 480-462-0410

This is a D.I.Y. Bolt Together Kit

**WE DO NOT OFFER
INSTALLATION OR
CONCRETE SERVICES!!!**

This Cold Form Cee Channel Building comes with Red Oxide Primer Framing finish and comes with 26GA PBR Paneling for both roof and walls. Current color selection is Polar White Walls with True Black Trim & Upgraded True Black Roof Color. (Building currently rated for 20 psf. snow and 115 mph wind, but if absolutely necessary, we can price out any adjustment for wind or snow to accommodate your design criteria.)

Primary 40x60x16 Building comes with Upgraded 3:12 Roof pitch

giving you 21' at the outside peak height! The package currently has
(1) 10'Wx14'H, (1) 9'Wx7'H & (1) 3070 framed openings on the 60'
Eave side as shown below in the images.

**(THIS CAN BE MODIFIED TO ACCOMODATE YOUR
IDEAL LAYOUT IF NEEDED!)**

(Doors were not included in the package, as we do not offer them)

**Retail Price: \$49,750 +++ = Mid-High 50's
Original Customers Clearance Price: \$44,300
Original Customers Deposit: \$11,075**

**Remaining Balance = Your Price: \$33,225
25% Deposit required = \$8,300!**

If needed, we will provide all New
State Certified Stamped Drawings for
the customer (2 weeks)

+ ALL FREE SHIPPING!(3 weeks
later) = 4-5 WEEKS TO DELIVER
STEEL ON SITE!

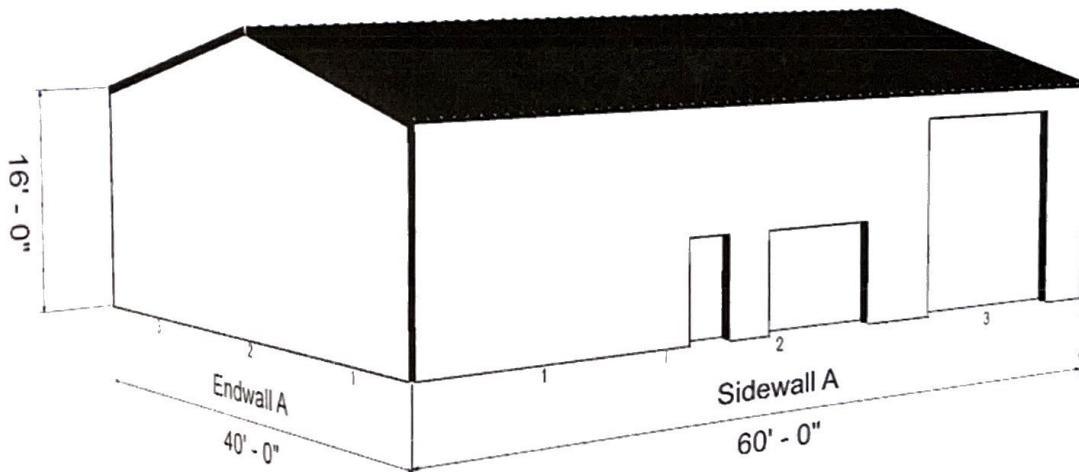
****STAMPED & SEALED FOUNDATION
PLANS INCLUDED****

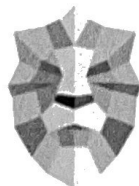
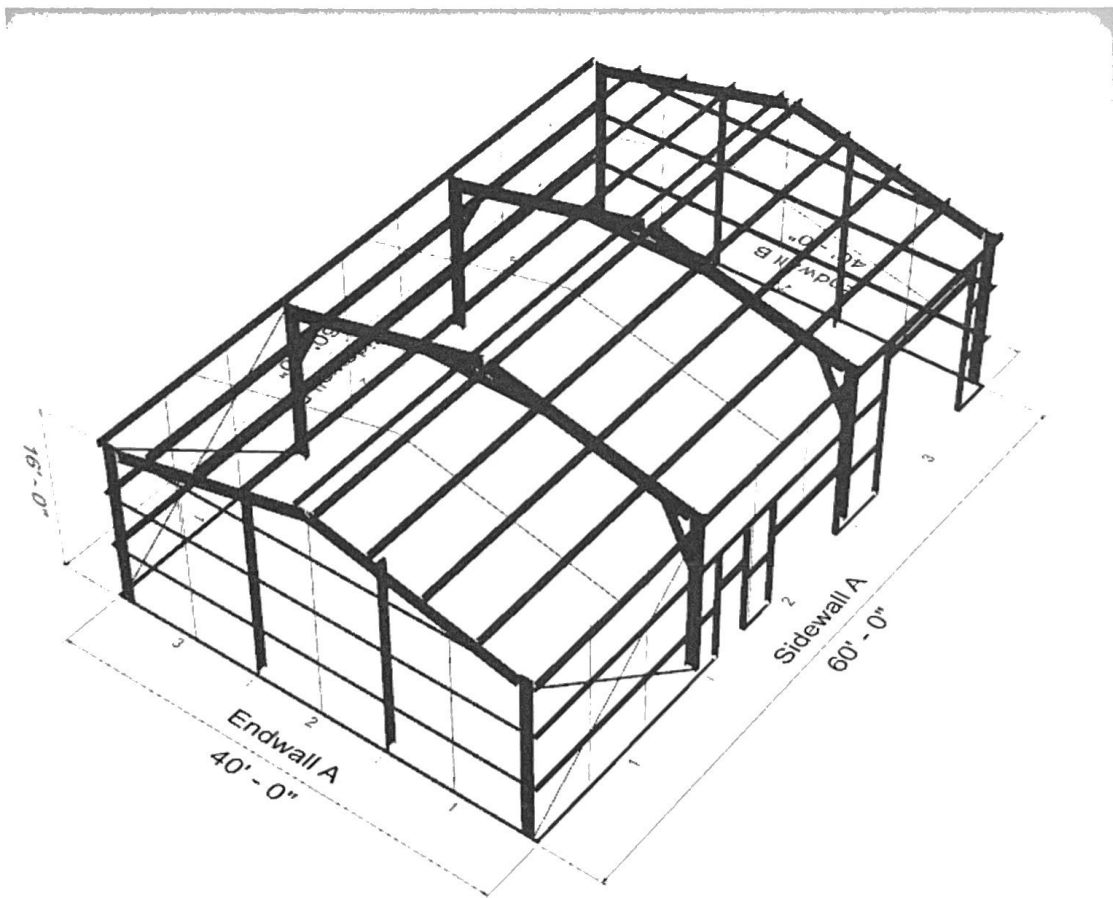
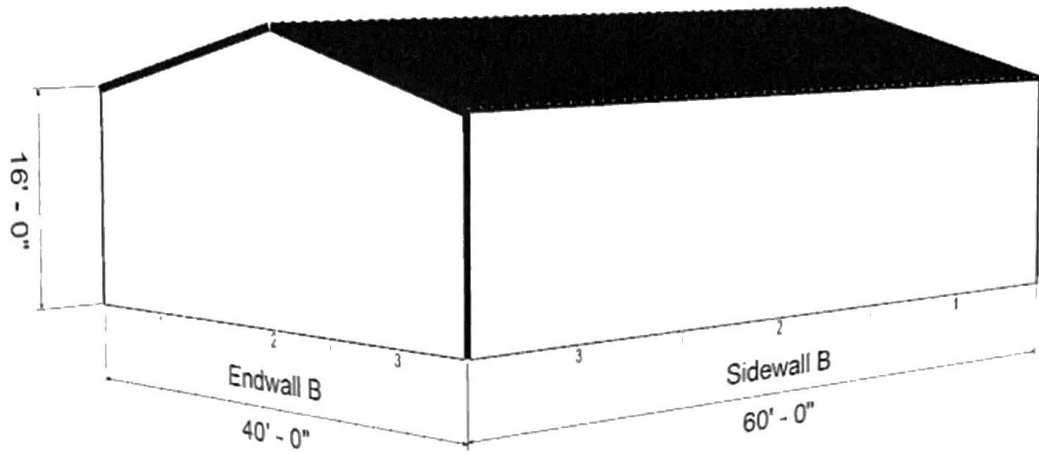
-Saves you an Additional \$2,500-
\$4,000!!

Questions? Call John at 480-462-0410

**DISCLAIMER: There is only 1 building available at this price and once it is sold, we will not sell another at this price point

**3 PHOTOS DIRECTLY BELOW
ARE OF THE STRANDED
BUILDING AVAILABLE!!**





ELITE METAL
BUILDINGS

We shine above the rest™